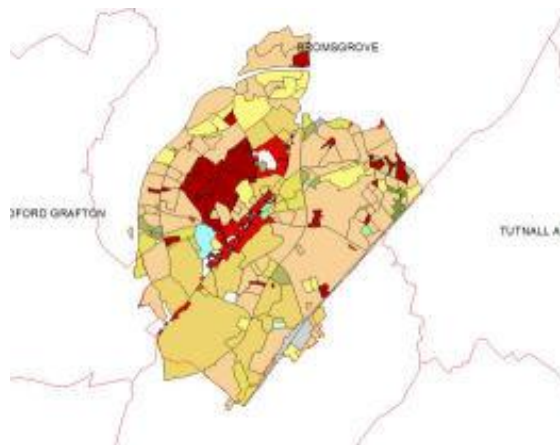
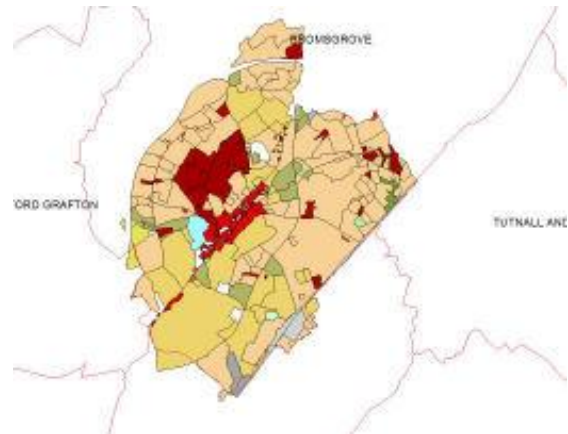




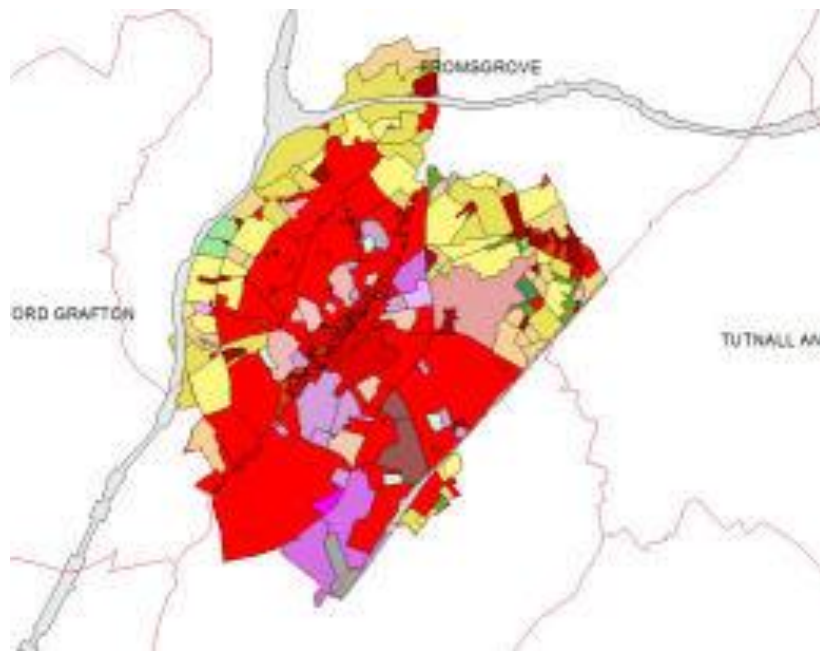
the landscape is defined and mapped as individual polygons in a seamless map layer, such as shown here in Rock parish. Information is collated from a variety of sources: physiographic data, modern maps, historic maps (including tithe, inclosure and estate maps), aerial photographs, Worcestershire's Historic Environment Record (HER), as well as the County's Landscape Character Assessment and habitat mapping data. Using these sources, HLC will reveal how Worcestershire has developed over time and demonstrate how the past is present in today's landscape.

The pilot study has been completed, mapping and characterising the historic landscape of three areas that represent a variety of Worcestershire's landscape types: Wyre Forest, the Vale of Evesham, and Bromsgrove. The HLC mapping to the right shows Bromsgrove parish as it looked in 1840. The fields are mainly post-medieval piecemeal enclosure. Of the parish's settlements (in blood red), Sidemoor village is still physically separated from Bromsgrove, whilst the remaining settlement pattern is one of isolated farms and clusters of wayside dwellings.



By the 1880s (left), little landscape change has occurred. Some field amalgamation has taken place on the fringes of settlement and there has been a decline in meadowland next to watercourses. Bromsgrove is still separate from Sidemoor village, however, and the remaining settlement pattern is still one of scattered isolated farmsteads and wayside dwellings.

Following the Second World War (below) there has been significant landscape change in and around Bromsgrove that has largely overwritten the previous historic landscape characters. Most of this change is the result of post-war modern urban expansion (in bright red), with a rise in civic amenities such as hospitals, schools, playing fields, golf courses and sports grounds (in pink and purple). The construction of the M5 and M42 motorways has also forced the reorganisation of numerous fields and field amalgamation. The full pilot study report will be available here as a PDF download soon.



With similar detailed data for the whole County, HLC will provide a platform for past-oriented research. The Worcestershire HLC will support and inform outreach and educational programmes to engage the wider community about their local historic landscape. The visual nature of HLC mapping makes it ideal for revealing the diversity, local character and sensitivity of the County's existing historic landscape, creating a 'sense of place' and community identity, connecting people to the landscape in a new way.

The completed Worcestershire HLC project (2010) will be disseminated in a variety of formats, comprising a final paper and digital report, also available as a downloadable document on Worcestershire County Council's website, as a CD-ROM and with presentations to stakeholders and the community, helping to raise awareness of Worcestershire's rich and varied historic landscape. It is also envisaged that the completed HLC project mapping will be available as a Worcestershire County Council website with interactive GIS layers similar to the Worcestershire Tithe and Inclosure Map Project and the Landscape Character Assessment on Landscapes of Worcestershire.

Photograph: Bredon Hill and the Malvern Hills. © Copyright Vanessa Clarke 2007.

Worcestershire HLC mapping extracts: Rock and Bromsgrove parishes. © Crown copyright. All rights reserved. Worcestershire County Council 100015914. For reference purposes only. No further copies may be made.