

UNEMPLOYMENT SUMMARY

July 2008

Table 1: Unadjusted Claimant Count Unemployment by Local Authority District (based on 2001 Census wards)

	Male	Female	Total	Rate*	Change on last month	Change on 12 months ago
Bromsgrove	485	210	695	1.6%	61	28
Malvern Hills	338	148	486	1.4%	57	-22
Redditch	824	338	1162	2.7%	28	31
Worcester	958	323	1281	2.6%	51	-114
Wychavon	661	300	961	1.7%	76	0
Wyre Forest	769	352	1121	2.3%	98	28
WORCESTERSHIRE	4035	1671	5,706	2.0%	371	-49

* The unemployment rates for Districts listed in the above table are calculated using 2001 Census projections of the economically active population. These rates are not comparable with ONS-produced County, Regional and National rates which use working age population

Table 2: Unadjusted Claimant Count Unemployment by County, Region and Nation.

	Male	Female	Total	Change on last month	Change on 12 months ago
Worcestershire	4,249	1,739	5,706	371	-49
rate*	2.8%	1.4%	2.0%	0.1%	-0.1%
West Midlands region	75,050	27,311	102,361	3,437	1,265
rate*	5.5%	2.4%	4.1%	0.1%	0.0%
England & Wales	554,455	211,537	765,992	29,856	13,047
rate*	4.1%	1.9%	3.1%	0.2%	0.1%

* The unemployment rates for Districts listed in the above table are calculated using 2001 Census projections of the economically active population. These rates are not comparable with ONS-produced County, Regional and National rates which use working age population

Table 3: Claimant Count Unemployment by Urban centre

	Male	Female	Total	Rate*	Change on last month	Change on 12 months ago
Bewdley	32	16	48	1.8%	9	-2
Bromsgrove	319	140	459	1.8%	38	30
Droitwich	156	60	216	1.8%	28	-4
Evesham	177	95	272	2.3%	22	36
Kidderminster	519	237	756	2.7%	57	54
Malvern	208	88	296	1.7%	36	-22
Pershore	76	14	90	2.5%	6	-6
Redditch	794	327	1121	2.8%	30	28
Stourport-on-Severn	140	70	210	2.1%	13	-12
Worcester	958	323	1281	2.6%	51	-114
Wythall	49	21	70	1.2%	6	-11
Urban total	3428	1391	4819	2.3%	296	-23
As % of County total	80.7%	80.0%	84.5%			

* Unemployment rates are expressed as a percentage of 2001 Census economically active populations,

ONS Produced Figures

Table 4: Claimant Count Unemployment by Travel-To-Work-Area (ONS)

TTWA	Male	Female	Total	Rate*	Change on last month	Change on 12 months ago
Birmingham	34,103	12,015	46,118	4.2	1320	607
Dudley & Sandwell	7,356	2,799	10,155	3.5	233	-308
Kidderminster	810	385	1,195	1.8	95	31
Worcester	1,349	471	1,820	1.8	116	-124
Evesham	353	174	527	1.3	22	7
Malvern	332	138	470	1.2	42	-33

*Proportions for travel to work areas are calculated using the mid-2001 resident working age population

Table 5: Unadjusted Claimant Count Unemployment by Local Authority District (ONS)

	Male	Female	Total	Rate*	Change on last month	Change on 12 months ago
Bromsgrove	699	278	977	1.8	66	-4
Malvern Hills	338	148	486	1.2	57	-21
Redditch	824	338	1,162	2.3	28	31
Worcester	958	323	1,281	2.2	51	-114
Wychavon	661	300	961	1.4	76	0
Wyre Forest	769	352	1,121	1.9	98	28
WORCESTERSHIRE	4,249	1,739	5,988	1.8	376	-80

* The unemployment rates for Districts listed in the above table express the number of claimants resident in an area as a percentage of the working age population resident in that area. Figures are derived from the 2004 resident working age population

Table 6: Unadjusted Claimant Count Unemployment by County, Region and Nation (ONS)

	Male	Female	Total	Change on last month	Change on 12 months ago
Worcestershire	4,249	1,739	5,988	376	-80
rate*	2.4	1.1	1.8	0.1	0.0
West Midlands region	75,050	27,311	102,361	3,437	1,265
rate*	4.4	1.7	3.1	0.1	0.0
United Kingdom	632,364	238,924	871,288	35,971	17,139
rate*	3.2	1.3	2.3	0.1	0.0

* The unemployment rates listed in the above table express the number of claimants resident in an area as a percentage of the working age population resident in that area. Figures are derived from the 2004 resident working age population.

VACANCIES SUMMARY

Notified Vacancies by Job Centre, Worcestershire

	June 2007	July 2007	August 2007	September 2007	October 2007	November 2007	December 2007	January 2008	February 2008	March 2008	April 2008	May 2008	June 2008	July 2008
Bromsgrove	338	252	299	322	270	297	339	204	367	283	182	240	361	242
Evesham	469	376	355	*	481	343	336	151	574	517	428	682	482	354
Kidderminster	492	445	557	578	548	523	494	297	685	452	392	419	694	529
Malvern	277	267	146	283	269	166	202	143	230	249	344	258	363	179
Redditch	621	584	536	871	846	766	809	362	700	848	506	479	660	747
Worcester	1182	1,098	1,419	1,616	1,502	1,363	1,404	584	1,492	1,612	1,312	1,205	1,528	1,365
WORCESTERSHIRE*	3,379	3,022	3,312	3,670	3,916	3,458	3,584	1,741	4,048	3,961	3,164	3,283	4,088	3,416

* Due to uncertainty with the figure supplied via NOMIS, the data for Evesham has been excluded this month.

Source: NOMIS Copyright reserved

WARNING:

* Aggregate of unfilled vacancies advertised at Job Centres within Worcestershire
It is estimated that one third of all vacancies are advertised through Job Centres

The numbers of notified vacancies since April 2003 appear to have been affected by a drive by Jobcentre Plus to increase notifications from many employers in chosen sectors.

Destination of claimants leaving the unemployment count in Worcestershire

July 2008

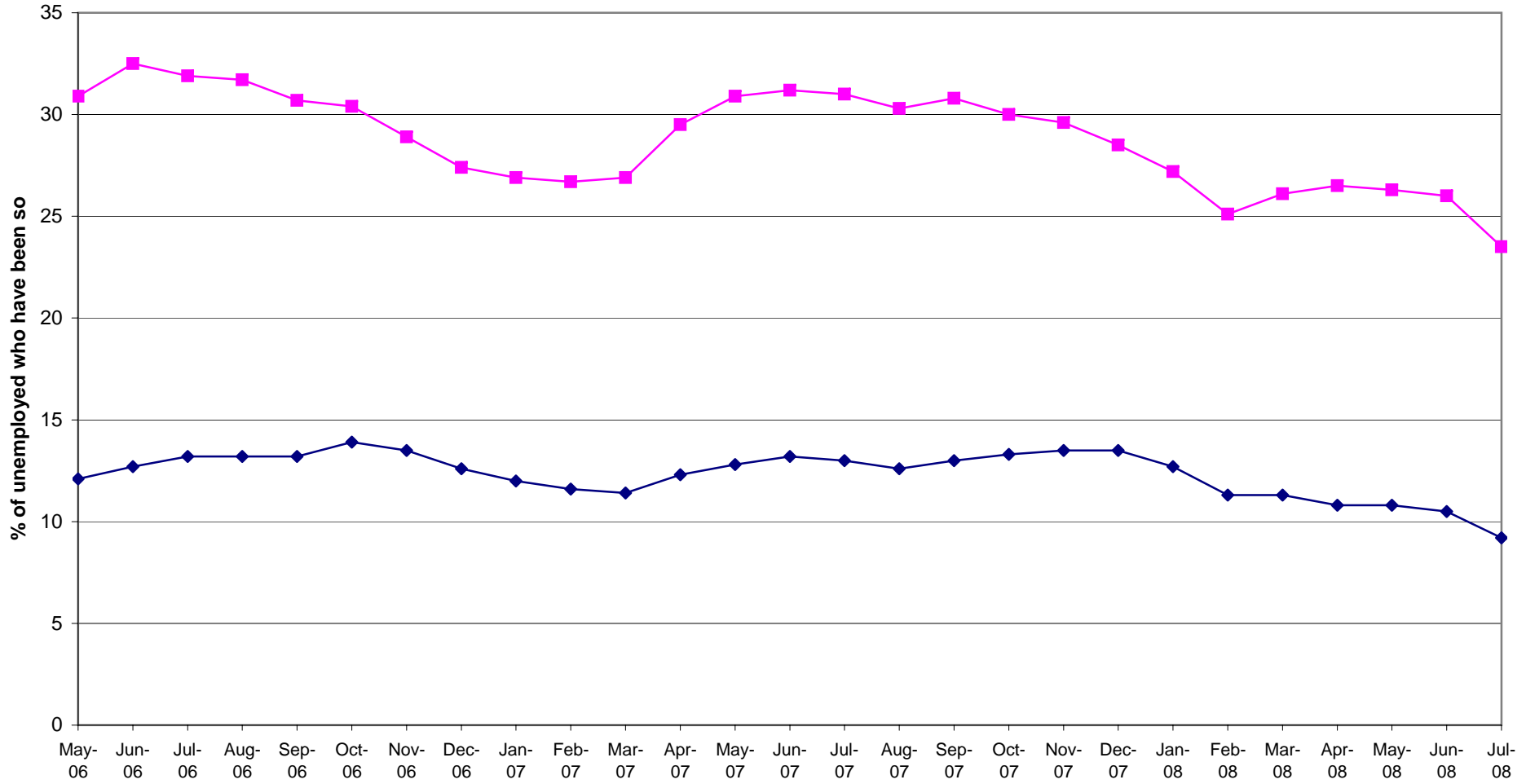
Destination	Number of people
Found work	555
Increases work to 16+ hours/week	10
Gone abroad	85
Claimed Income Support	20
Claimed Sickness Benefit	-
Claimed Incapacity Benefit	55
Claimed another benefit	25
Gone to full-time education	25
Gone onto approved training	*
Transfer to Govt-supported training	90
Retirement age reached	*
Automatic credits payable	*
Claims back-to-work bonus	*
Gone to prison	15
Attending court	*
New claim review	10
Defective claim	15
Ceased claiming	60
Deceased	*
Not known	75
Failed to sign	465
Total	1,500

Source: NOMIS

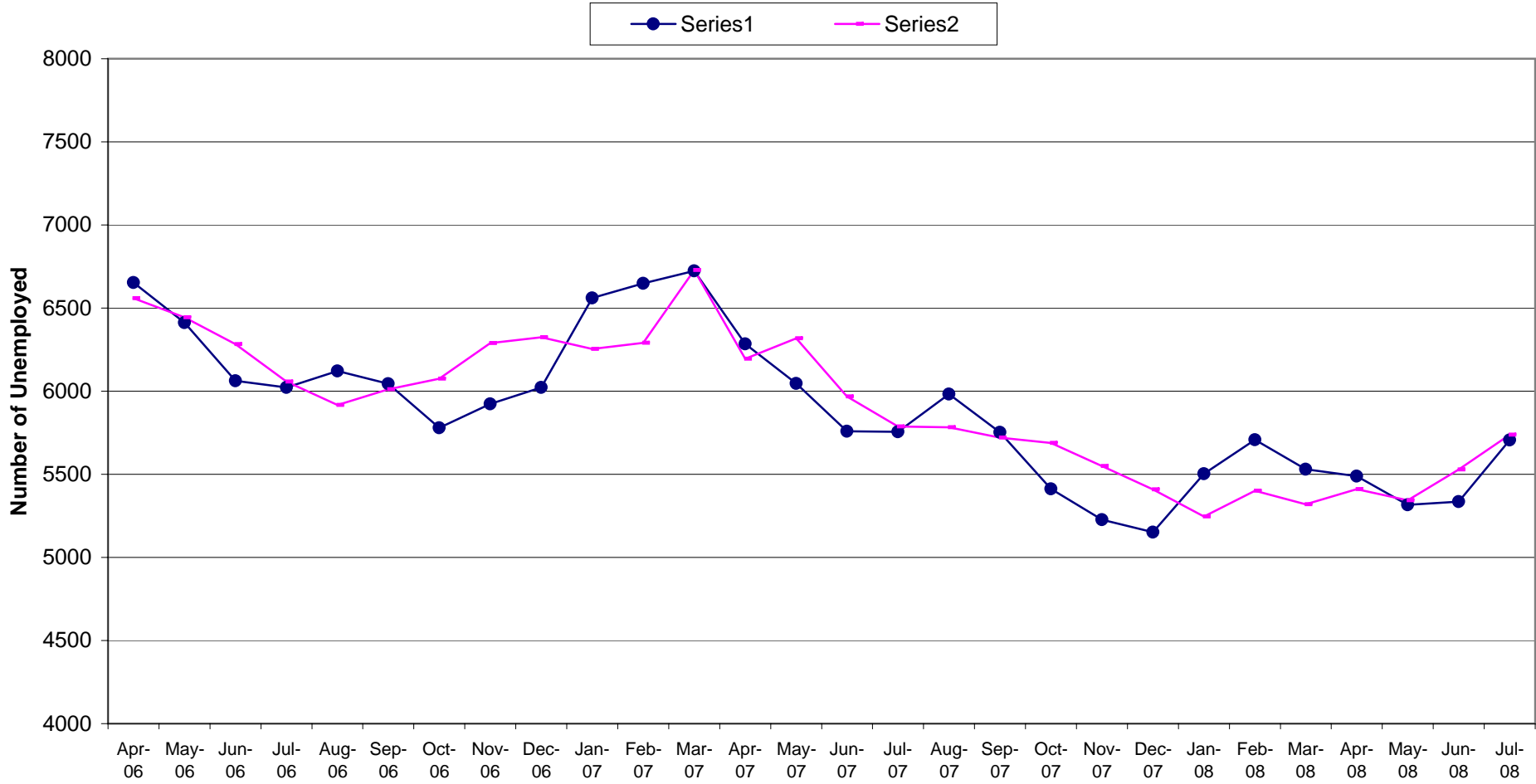
* Data unavailable due to disclosure

Duration of Unemployment

◆ more than 12 months ■ more than 6 months

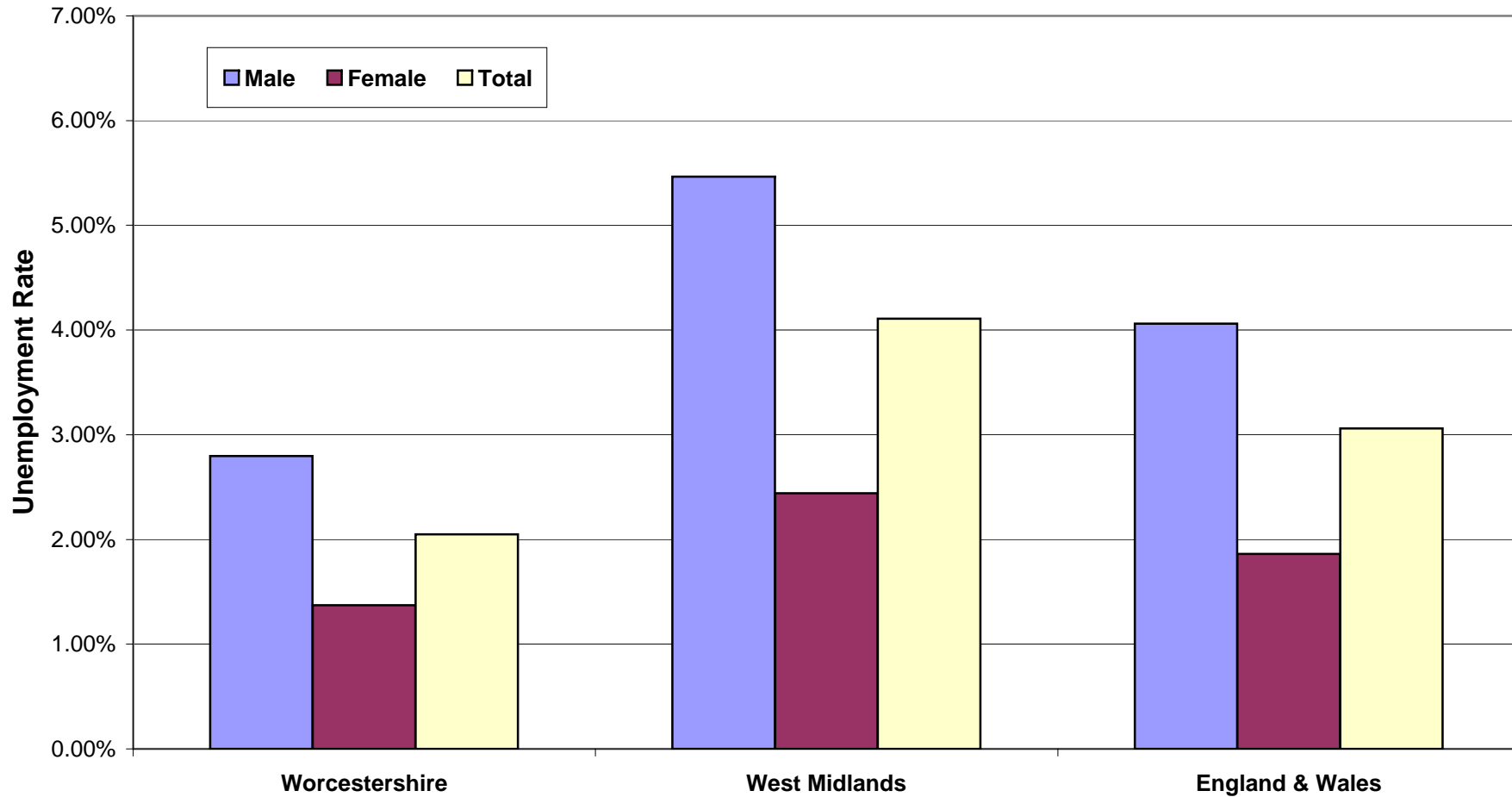


Adjusted and Unadjusted Unemployment Totals Worcestershire



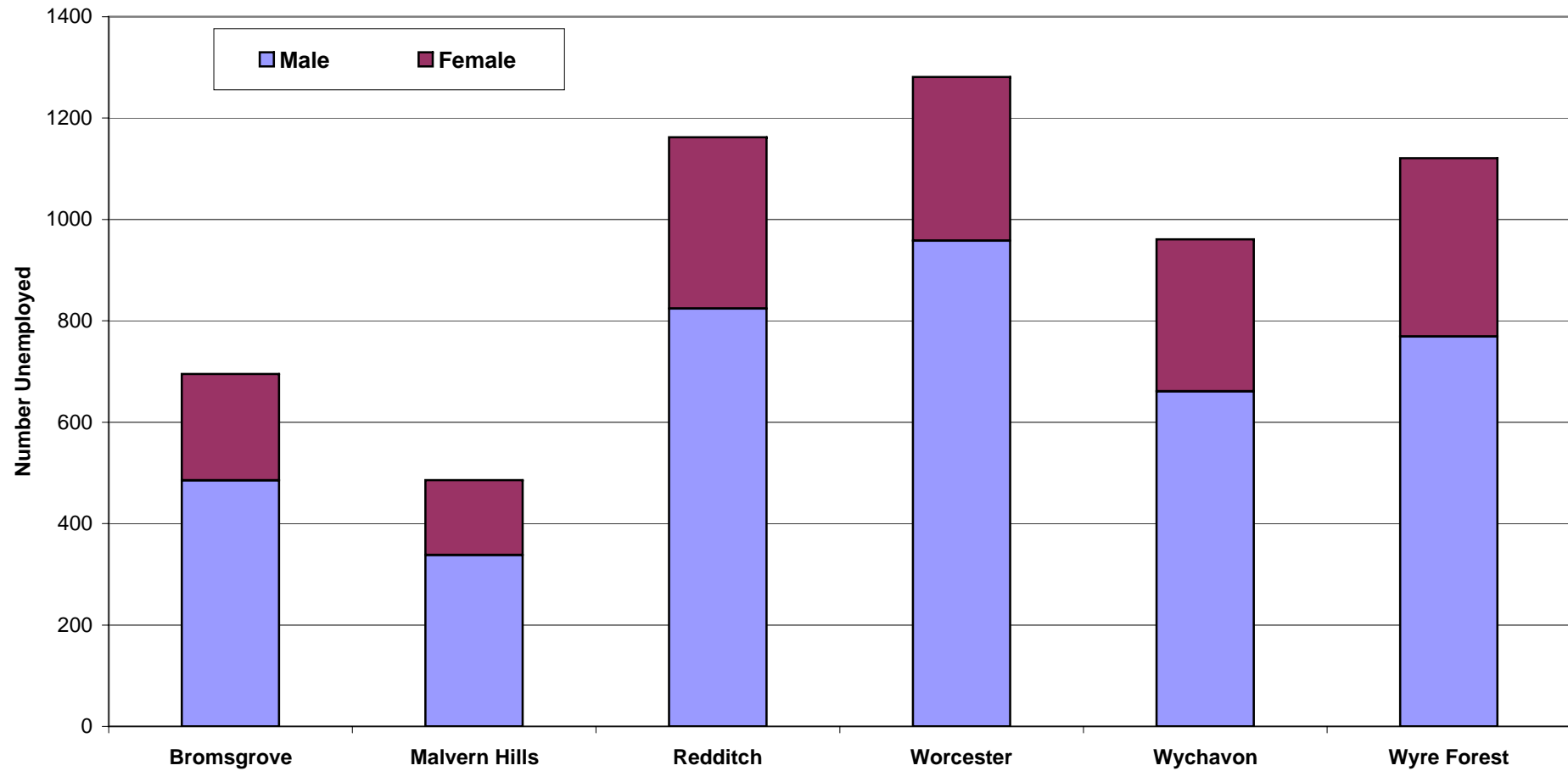
Note: As of Feb 04 claimant count data for Worcestershire is built up from 2001 census wards as opposed to 1991 wards. Care should be taken when comparing figures before this date as 1991 wards include parts of Bromsgrove that were lost to Birmingham during boundary changes in 1995

July 2008
Unadjusted Unemployment Rate: Male and Female Split*
Worcestershire, West Midlands and United Kingdom



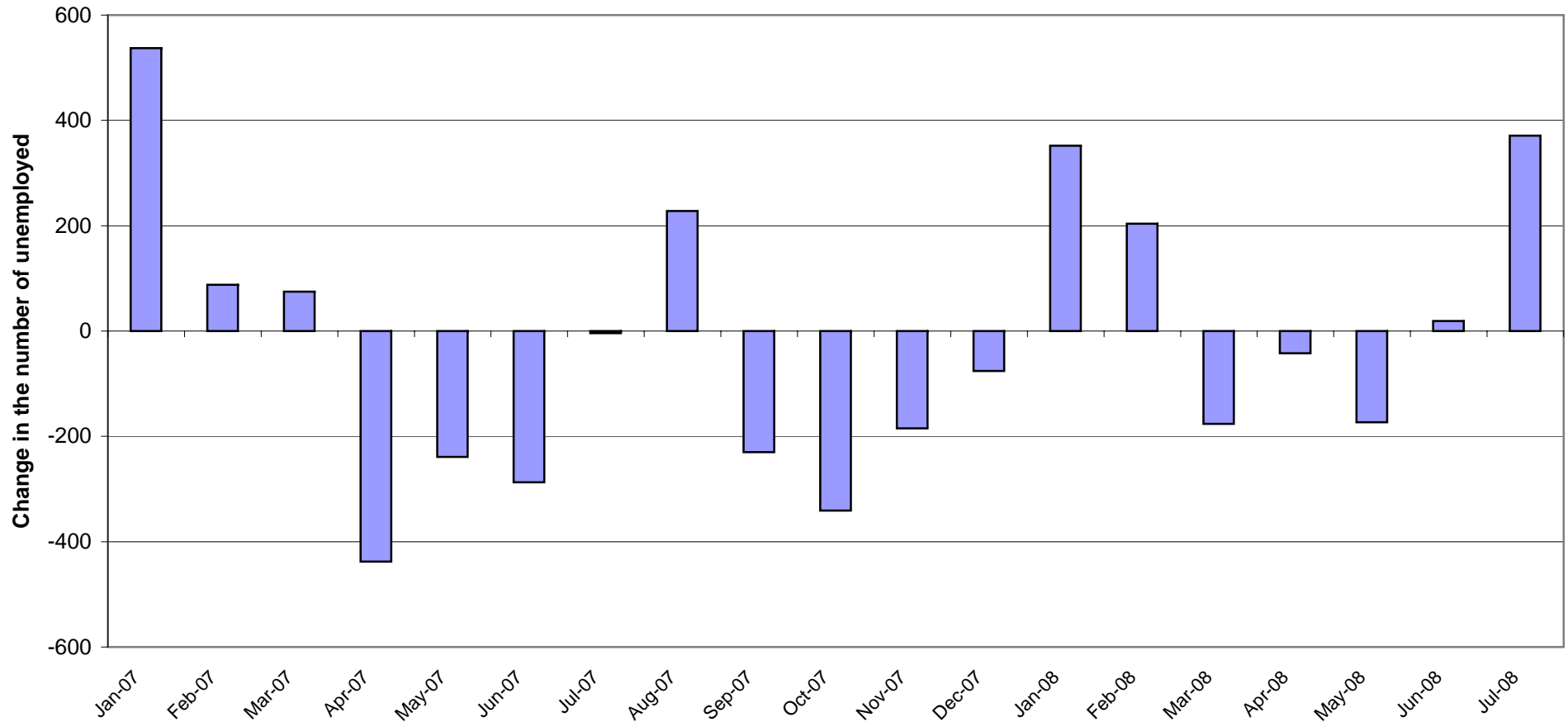
*figures based on table 2

July 2008
Unadjusted Claimant Count Unemployment: Male and Female Split*
Local Authority Districts



* figures based on table 1

Monthly Changes in Unemployment in Worcestershire



Note: As of Feb 04 claimant count data for Worcestershire is built up from 2001 census wards as opposed to 1991 wards. Care should be taken when comparing figures before this date as 1991 wards include parts of Bromsgrove that were lost to Birmingham during boundary changes in 1995 (see note at the front of March 04 summary)

EMPLOYMENT SUMMARY

January 2007 – December 2007

The figures published below are taken from the Annual Population Survey (APS), a residence-based labour market survey. Across Worcestershire, approximately 1,500 people are surveyed each year. Datasets are released quarterly, with each containing details from survey responses received in the preceding 12 months. Figures are based upon all responses received between January 2007 and December 2007. The dataset for April 2007 to March 2008 is due to be released during October 2008.

Employment by Local Authority in Worcestershire, January 2007 - December 2007 (working age)

Authority	Number employed	Employment rate ¹	95% Confidence Interval of rate (percentage points) ²	Lower confidence limit (rate minus confidence interval)	Upper confidence limit (rate plus confidence interval)
Bromsgrove	45,900	84.6	5.5	79.1	90.1
Malvern Hills	31,200	75.4	7.9	67.5	83.3
Redditch	42,200	82.5	5.4	77.1	87.9
Worcester	46,500	78.9	6.0	72.9	84.9
Wychavon	53,400	77.7	6.0	71.7	83.7
Wyre Forest	41,800	70.8	7.2	63.6	78.0
Worcestershire	261,000	78.3	2.6	75.7	80.9

¹ Rate is calculated as a proportion of all people of working age (Male = 16-64, Females = 16-59).

² The confidence interval is the range of values, above or below the employment rate, within which we can be 95% sure that the true value for the whole population lies.

Source: NOMIS, 2008. Annual Population Survey.

Employment by industry in Worcestershire, January 2007 – December 2007 (working age)

Industry	Number employed	Employment rate¹	95% Confidence Interval of rate (percentage points)²	Lower confidence limit (rate minus confidence interval)	Upper confidence limit (rate plus confidence interval)
Agriculture and fishing	7,300	2.8	1.2	1.6	4.0
Energy and water	1,300	0.5	*	*	*
Manufacturing	51,600	19.8	2.8	17.0	22.6
Construction	24,400	9.3	2.0	7.3	11.3
Distribution, hotels and restaurants	50,500	19.3	2.8	16.5	22.1
Transport and communications	11,800	4.5	1.5	3.0	6.0
Banking, finance and insurance	40,100	15.4	2.5	12.9	17.9
Public admin. education and health	60,900	23.3	3.0	20.3	26.3
Other services	10,500	4.0	1.4	2.6	5.4
Total services	173,800	66.6	3.3	63.3	69.9

* Estimate and confidence interval unreliable since the group sample size is small (3-9).

¹ Rate is calculated as a proportion of those of working age who are in employment.

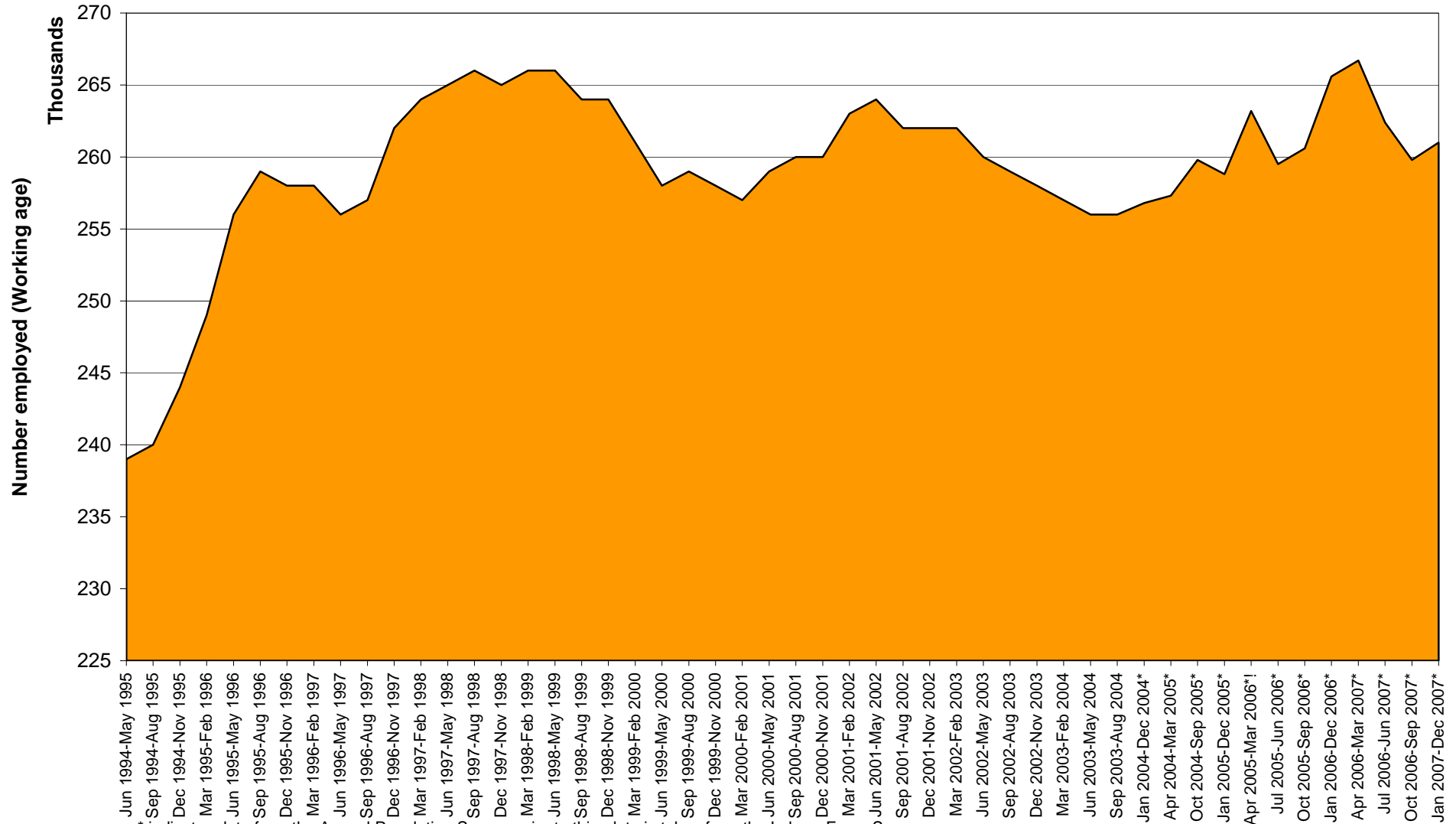
² The confidence interval is the range of values, above or below the employment rate, within which we can be 95% sure that the true value for the whole population lies.

³ Total Services includes 'Distribution, Hotels and Restaurants', 'Transport and Communications', 'Banking, Finance and Insurance', 'Public Administration, Education and Health' and 'Other Services'.

Data cannot be provided at Local Authority level as sample sizes are too small to provide reliable estimates for several sectors.

Source: NOMIS, 2008. Annual Population Survey.

Number of people of working age in employment, Worcestershire



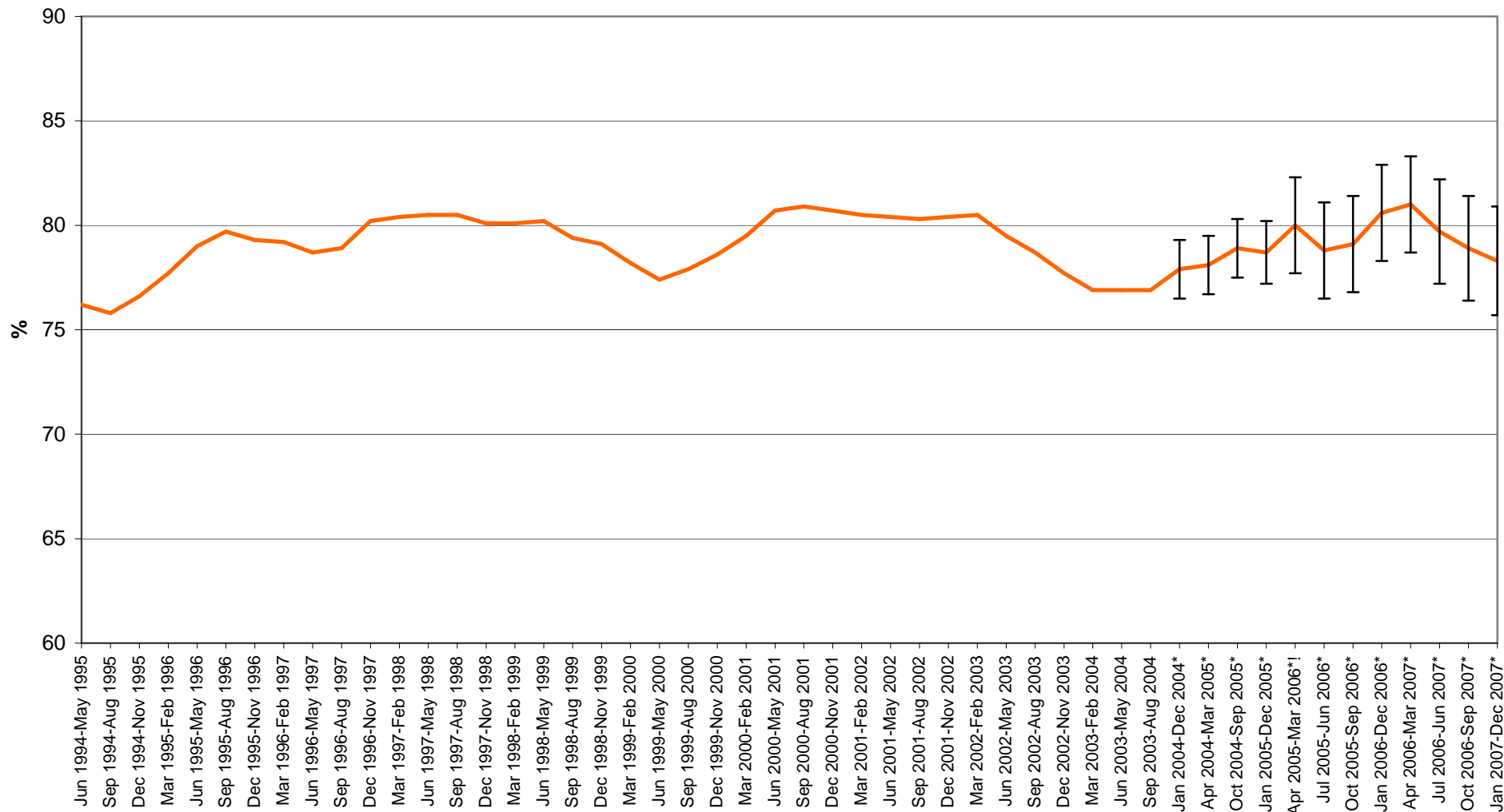
* indicates data from the Annual Population Survey, prior to this, data is taken from the Labour Force Survey.

! from this year onwards, the sample size for Worcestershire was reduced from 4,500 to 1,500.

Source: NOMIS, Labour Force Survey and Annual Population Survey.

Time period

Working age employment rate, Worcestershire (Jun1994-May1995 to Jan2007-Dec2007)



* indicates data from the Annual Population Survey (APS), prior to this, data is taken from the Labour Force Survey (LFS).

! from this year onwards, the sample size for Worcestershire was reduced from 4,500 to 1,500.

Bars indicate 95% confidence interval (CI). CIs are only provided for APS data. The confidence interval is the range of values, above or below the rate, within which we can be 95% sure that the true value for the whole population lies.

Source: NOMIS, Labour Force Survey and Annual Population Survey.

Time period

APPENDIX - Ward Unemployment Figures

Claimant Count Unemployment by Ward* in Worcestershire

July 2008

Bromsgrove District	Male	Female	Total	Rate**
ALVECHURCH	34	12	46	1.4%
BEACON	11	7	18	1.7%
CATSHILL	41	12	53	2.3%
CHARFORD	77	27	104	4.1%
DRAKES CROSS & WALKERS HEATH	22	9	31	1.2%
FURLONGS	13	6	19	1.0%
HAGLEY	15	9	24	1.2%
HILLSIDE	15	8	23	1.0%
HOLLYWOOD & MAJORS GREEN	19	6	25	1.1%
LINTHURST	2	2	4	0.3%
MARLBROOK	15	7	22	1.0%
NORTON	18	11	29	1.1%
ST JOHNS	24	14	38	2.0%
SIDEMOOR	27	17	44	1.8%
SLIDESLOW	19	9	28	1.5%
STOKE HEATH	10	8	18	1.2%
STOKE PRIOR	14	3	17	1.6%
TARDEBIGGE	5	6	11	0.8%
UFFDOWN	20	3	23	2.1%
WASELEY	38	12	50	2.2%
WHITFORD	32	14	46	1.7%
WOODVALE	6	2	8	0.7%
WYTHALL SOUTH	8	6	14	1.3%
District Total	485	210	695	1.6%
County Total	4035	1671	5706	2.0%

* 2001 Census Wards are used

** Rates are expressed as a percentages of the 2001 Census economically active population. They are not comparable with the rates published by ONS for Counties and Regions

Claimant Count Unemployment by Ward* in Worcestershire

July 2008

Malvern Hills District	Male	Female	Total	Rate**
ALFRICK & LEIGH	10	1	11	0.7%
BALDWIN	5	4	9	1.0%
BROADHEATH	15	6	21	1.3%
CHASE	34	14	48	1.8%
DYSON PERRINS	10	11	21	1.3%
HALLOW	5	2	7	0.8%
KEMPSEY	22	10	32	1.7%
LINDRIDGE	7	7	14	1.3%
LINK	29	10	39	1.4%
LONGDON	10	3	13	1.3%
MARTLEY	8	4	12	1.4%
MORTON	4	0	4	0.4%
PICKERSLEIGH	62	24	86	3.2%
POWICK	16	9	25	1.3%
PRIORY	20	8	28	1.8%
RIPPLE	3	4	7	0.8%
TEME VALLEY	4	2	6	0.6%
TENBURY	12	5	17	1.0%
UPTON & HANLEY	20	10	30	1.5%
WELLS	7	3	10	0.6%
WEST M	30	9	39	1.7%
WOODBURY	5	2	7	0.7%
District Total	338	148	486	1.4%
County Total	4035	1671	5706	2.0%

* 2001 Census Wards are used

** Rates are expressed as a percentages of the 2001 Census economically active population. They are not comparable with the rates published by ONS for Counties and Regions

Claimant Count Unemployment by Ward* in Worcestershire

July 2008

Redditch Borough	Male	Female	Total	Rate**
ABBEY	69	19	88	3.2%
ASTWOOD BANK & FECKENHAM	30	11	41	1.4%
BATCHLEY	111	46	157	5.1%
CENTRAL	86	39	125	4.5%
CHURCH HILL	109	38	147	3.1%
CRABBS CROSS	22	19	41	1.3%
GREENSLANDS	88	36	124	2.9%
HEADLESS CROSS & OAKENSHAW	50	24	74	1.6%
LODGE PARK	72	35	107	4.1%
MATCHBOROUGH	55	18	73	2.1%
WEST	26	14	40	1.3%
WINYATES	106	39	145	2.8%
District Total	824	338	1162	2.7%
County Total	4035	1671	5706	2.0%

* 2001 Census Wards are used

** Rates are expressed as a percentages of the 2001 Census economically active population. They are not comparable with the rates published by ONS for Counties and Regions

Claimant Count Unemployment by Ward* in Worcestershire

July 2008

Worcester City	Male	Female	Total	Rate**
ARBORETUM	73	18	91	2.9%
BATTENHALL	43	9	52	1.9%
BEDWARDINE	44	22	66	1.6%
CATHEDRAL	139	46	185	4.5%
CLAINES	37	19	56	1.4%
GORSE HILL	88	35	123	4.8%
NUNNERY	86	33	119	3.0%
RAINBOW HILL	102	30	132	4.7%
ST CLEMENT	51	14	65	2.4%
ST JOHN	87	26	113	2.9%
ST PETERS PARISH	16	10	26	0.8%
ST STEPHEN	37	10	47	1.8%
WARNDON	117	34	151	5.8%
WARNDON PARISH NORTH	24	8	32	1.0%
WARNDON PARISH SOUTH	14	9	23	0.7%
District Total	958	323	1281	2.6%
County Total	4035	1671	5706	2.0%

* 2001 Census Wards are used

** Rates are expressed as a percentages of the 2001 Census economically active population. They are not comparable with the rates published by ONS for Counties and Regions

Claimant Count Unemployment by Ward* in Worcestershire

July 2008

Wychavon District	Male	Female	Total	Rate**
BADSEY	12	8	20	1.5%
BENGEWORTH	34	20	54	2.1%
BOWBROOK	4	5	9	0.7%
BREDON	5	4	9	0.7%
BRETFORTON & OFFENHAM	15	8	23	1.7%
BROADWAY & WICKHAMFORD	20	5	25	1.2%
DODDERHILL	13	6	19	1.7%
DRAKES BROUGHTON	9	5	14	1.1%
DROITWICH CENTRAL	28	9	37	2.7%
DROITWICH EAST	36	11	47	1.8%
DROITWICH SOUTH EAST	12	8	20	0.7%
DROITWICH SOUTH WEST	42	9	51	2.1%
DROITWICH WEST	38	23	61	2.4%
ECKINGTON	13	5	18	1.4%
ELMLEY CASTLE & SOMERVILLE	9	6	15	1.2%
EVESHAM NORTH	54	34	88	3.5%
EVESHAM SOUTH	40	18	58	2.2%
FLADBURY	11	9	20	1.5%
GREAT HAMPTON	16	9	25	2.1%
HARTLEBURY	11	11	22	1.6%
HARVINGTON & NORTON	20	11	31	2.3%
HONEYBOURNE & PEBWORTH	19	4	23	1.9%
INKBERROW	10	5	15	0.5%
LITTLE HAMPTON	33	14	47	1.6%
LOVETT & NORTH CLAINES	19	19	38	1.5%
NORTON & WHITTINGTON	7	2	9	0.5%
OMBERSLEY	11	2	13	1.2%
PERSHORE	76	14	90	2.5%
PINVIN	16	3	19	1.4%
SOUTH BREDON HILL	6	5	11	1.0%
THE LITTLETONS	10	5	15	1.0%
UPTON SNODSBURY	12	3	15	1.2%
District Total	661	300	961	1.7%
County Total	4035	1671	5706	2.0%

* 2001 Census Wards are used

** Rates are expressed as a percentages of the 2001 Census economically active population. They are not comparable with the rates published by ONS for Counties and Regions

Claimant Count Unemployment by Ward* in Worcestershire

July 2008

Wyre Forest District	Male	Female	Total	Rate**
AGGBOROUGH & SPENNELLS	55	16	71	1.7%
ARELEY KINGS	47	26	73	2.5%
BEWDLEY & ARLEY	40	20	60	1.8%
BLAKEDOWN & CHADDESLEY	17	8	25	1.2%
BROADWATERS	119	39	158	3.9%
COOKLEY	15	6	21	1.8%
FRANCHE	45	19	64	1.6%
GREENHILL	65	36	101	2.6%
HABBERLEY & BLAKEBROOK	37	21	58	1.9%
LICKHILL	34	18	52	1.4%
MITTON	59	26	85	2.4%
OFFMORE & COMBERTON	48	22	70	2.1%
OLDINGTON & FOLEY PARK	88	53	141	6.4%
ROCK	5	3	8	0.7%
SUTTON PARK	62	31	93	2.5%
WOLVERLEY	8	4	12	1.2%
WRIBBENHALL	25	4	29	1.3%
District Total	769	352	1121	2.3%
County Total	4035	1671	5706	2.0%

* 2001 Census Wards are used

** Rates are expressed as a percentages of the 2001 Census economically active population. They are not comparable with the rates published by ONS for Counties and Regions