

Extended Services in and around schools

Worcester City Action Plan

2008-2009

The Worcester City Community and School Cluster Action Plan presents the work that the Extended Schools Team will be focusing on in Worcester City over the next 12 months to schools and partners. The objectives within the plan address the needs of the local community; support all schools in providing access to the full core offer of services and most importantly support all children and young people to achieve positive outcomes. Over time the action plans will strengthen to ensure we effectively narrow the gap in outcomes for specific groups of children and young people and improve the quality of life of every child's/young person's learning and achievement journey through early years settings, schools and colleges.

The content within this plan is a direct result of a structured local planning process, which has involved all schools and a wide range of partner agencies and organisations. It has also been informed by conversations held with schools both individually and at Pyramid meetings. There is a commitment to having ongoing dialogue via these and other forums to ensure that the plan continues to reflect and address the needs of Worcester City.

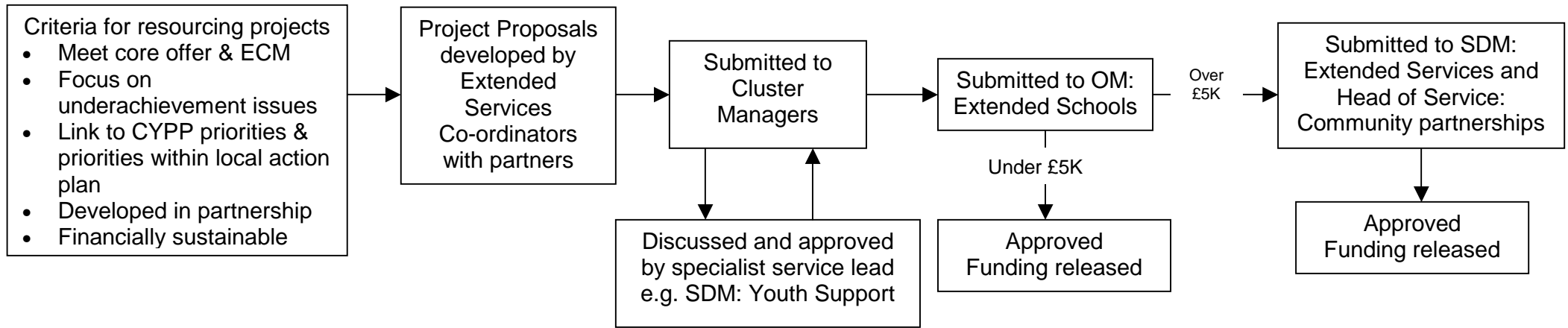
The plan also includes actions that build on local and national good practice, partnership working and supporting schools and/or the local authority to meet their statutory duties. All the financial costs identified next to projects are indicative at this stage and based on this financial year. More detailed costs will be clarified as project proposals develop. The approval process for this release of funding is outlined over the page.

On reviewing the emerging priorities of all 12 Community and School Clusters, it became evident that, while the Cluster structures are still evolving, a number of services would be best developed across the county to ensure consistency and best value. This supports Worcestershire in meeting the central government target of all schools providing access to a 'core offer' of services by 2010. Therefore, all 12 Community and School Cluster action plans have been divided into three main sections. Section 1 focuses on those areas of work to be implemented locally to meet specific needs but which will benefit from countywide co-ordination. Section 2 outlines priorities and actions that are being developed to address issues that are specific to the Worcester City Cluster and which will be delivered through local arrangements. Section 3 contains projects, which have been identified as priorities but require further exploration regarding how to implement them locally: it is likely these areas of work will move into Section 1 and 2 when the plans are reviewed.

The action plan will be formally reviewed on a regular basis. However, the plans will remain flexible to enable the Extended Schools Team to harness new innovative ideas and projects, which continue meeting the needs of Children and Young People in Worcestershire. Schools and partners will be kept informed of progress via the Extended Services Newsletter and by regular monitoring reports.

All the plans, supportive information and progress reports will be published on www.worcestershire.gov.uk/extendedservices or www.edulink.networcs.net.

Approval process for projects



If funding is used to appoint County Council Staff, which includes staff based within schools, Children's Services Leadership Team will sign an official approval form.

Section 1

This section of the plan outlines those actions that will be locally delivered but supported by central co-ordination. These actions are a direct result of priorities identified across the county through the Community and School Cluster planning process. The actions also build upon knowledge of existing gaps in provision in relation to the Extended Services Core Offer. For consistency and best value, it makes sense to co-ordinate these actions centrally working with each Cluster to identify local delivery mechanisms. A three-year approach has been taken for all of these projects building in a clear sustainability strategy: it is anticipated that after this time a co-ordinated countywide approach may not be necessary.

The resources within this section reflect individual Cluster allocations (i.e. specific to Worcester City)

1. All schools are providing access to the full core offer of services by 2010				
<i>Baseline information: Extended Schools audit</i>				
<i>Measures: Extended Schools audit</i>				
<i>Rationale: Local authority extended schools target. Supports all elements of the Every Child Matters agenda. Supports schools to address aspects of underachievement</i>				
Objective		Action	Success Criteria	Costs
1.1	To continue to manage an Extended Schools Team which provides schools with direct support for developing and delivering extended services	<ul style="list-style-type: none"> • Deploy 1/6 Cluster Manager and 1 ¾ FTE Extended Services Co-ordinators to support developments across Worcester City • Ensure each member of the team has access to the appropriate support e.g. phones, laptops and travel 	<ul style="list-style-type: none"> • Schools meet the core offer 	£63,754
1.2	Monitor the progress of extended services developments including the impact on Children and Young People	<ul style="list-style-type: none"> • Develop an electronic web-based audit tool that monitors the level of services on offer • Develop a monitoring system that allows schools to monitor the impact of extended services on students 	<ul style="list-style-type: none"> • Audit tool in place and populated • Schools using information from the tool in their SEFs 	Resources may be allocated locally to support schools to use audit tool
Total				£63,754

2. More children and young people are accessing 5 hours of sporting activities a week

Baseline information: *Gathered through the Community Sports Partnership*

Measures: *Gathered through the Community Sports Partnership*

Rationale: *Supports the Youth Matters agenda, positive activities for young people has been identified as a priority through the Extended Services Planning Process, relies on match funding from Sport England, Trailblazer Authority*

Objective		Action	Success Criteria	Costs
2.1	Work in partnership with the County Sports Partnership and Youth Support to offer a 5 hour entitlement to “Extended Activities” for children and young people	<ul style="list-style-type: none"> Develop requirements of usage of funding and draw up an appropriate contract Ensure all Cluster Managers, Youth Team Managers, PDMs and SDOs are actively involved in developing local plans for implementing the 5 hour offer 	<ul style="list-style-type: none"> Contract in place by June 08 Plans approved by June 08 	£20,000
Total				£20,000

3. More parents have access to information

Baseline information: *Information taken from Information to Parents Strategy*

Measures: *Yearly consultation with parents, Extended Schools Audit*

Rationale: *Identified as a priority through the Extended Services Planning Process, elements of the Information to Parents Strategy and is a Local Authority duty within the Childcare Act 2006*

Objective		Action	Success Criteria	Costs
3.1	Develop information sessions for parents at key transition points in <u>all</u> schools in Worcestershire	<ul style="list-style-type: none"> Contribute towards the salary of Information Session Co-ordinator Develop and implement a training and resource package for ‘Information Champions’ within schools Monitor and evaluate information sessions delivered 	<ul style="list-style-type: none"> All schools delivering information sessions Positive feedback from parents 	£1,904
Total				£1,904

4. More families, with school aged children, have access to Early Intervention Family Support

Baseline information: **Number of EIFSW currently in place**

Measures: **Number of Referrals**

Rationale: **Main priority identified by schools and partners, research demonstrates significant impact of raising achievement, requirement of use of funding**

Objective		Action	Success Criteria	Costs
4.1	Develop additional capacity to deliver early intervention family support in and around <u>all</u> schools across Worcester City	<ul style="list-style-type: none"> • Develop a project proposal and plan which defines the following <ul style="list-style-type: none"> ○ The type of EIFSW needed e.g. EIFSW posts ○ Local management arrangements should new posts be established ○ Budget Holding Lead Professional Role ○ Links to the CAF process ○ Impact measures ○ Gather baseline information ○ How family support work links to other work / activity in local areas ○ Clear exit strategy in place • Continue to support the appointment of 5 EIFSW and develop sustainability plan for maintaining the posts long term 	<ul style="list-style-type: none"> • Plan in place • EIFSW appointed and sustained 	£89,671
Total				£89,671

5. More parents accessing parenting courses

Baseline information: **Information gathered through mapping**

Measures: **Record of training**

Rationale: **Identified as a priority through the Extended Services Planning Process, elements of the Parenting Strategy**

Objective		Action	Success Criteria	Costs
5.1	Develop an appropriate range of training opportunities for practitioners providing parenting support	<ul style="list-style-type: none"> • Work with those leading on parenting workforce development to develop an appropriate plan for the ongoing training of practitioners 	<ul style="list-style-type: none"> • More parents trained in delivering parenting programmes 	To be determined once appropriate plan is in place
Total				TBC

6. More schools and partners are involved in the development and delivery of extended services

Baseline information: Number of meetings, attendance at planning days

Measures: Number of meetings, attendance at planning days

Rationale: Underpins the Extended Services In and Around Schools Strategy

Objective		Action	Success Criteria	Costs
6.1	Develop a structured planning process, delivered through Community and School Clusters, that allows schools and partners to lead the development of local action plans	<ul style="list-style-type: none"> Work with EIAs and the TDA to design a suitable planning process Organise and implement the planning process, including booking venues, organising delegate packs 	<ul style="list-style-type: none"> Planning process developed Positive attendance at planning events 	£2,000
6.2	Develop a regular meeting pattern with all schools to ensure plans support aspects of underachievement	<ul style="list-style-type: none"> Build relationships with school pyramids (where this is an appropriate structure) and regularly attend meetings Develop meetings for 'families' of schools 	<ul style="list-style-type: none"> Frequency of meetings of schools 	N/A
Total				£2,000

7. More parents and practitioners, including schools, are using the Family Services Directory (FSD)

Baseline information: Website hits, information collected at planning events

Measures: Website hits

Rationale: Identified as a priority through the Extended Services Planning Process, elements of the Information to Parents Strategy and is a Local Authority Duty within the Childcare Act 2006

Objective		Action	Success Criteria	Costs
12.1	Develop the FSD to enable schools to use it more effectively	<ul style="list-style-type: none"> Contribute towards the salary of a project manager who will lead the developments Contribute towards the cost of a new information system if needed 	<ul style="list-style-type: none"> FSD is developed inline with feedback from schools 	£835
12.2	Promote the FSD through schools	<ul style="list-style-type: none"> Drop off leaflets and marketing material off in schools Promote the FSD at meetings Put weblink to FSD onto schools websites 	<ul style="list-style-type: none"> More schools are aware of FSD 	N/A
Total				£835

8. More schools are engaging parents in decision making

Baseline information: **Number of schools with Parent Councils**

Measures: **Number of schools with Parent Councils**

Rationale: **Identified as an area for development through the Extended Services Planning Process and is an element of the Parent Engagement Strategy**

Objective		Action	Success Criteria	Costs
8.1	Continue to support schools to develop their expertise in engaging with parents	<ul style="list-style-type: none"> Continue to contribute towards the salary of the Parent Engagement Adviser Invest in a Parent Engagement Worker (2 years) to actively support schools to develop Parent Councils Develop a Parent Engagement Toolkit Ensure all ESCos are offering appropriate support to schools Develop a common questionnaire for schools to use when consulting with parents 	<ul style="list-style-type: none"> More Parent Councils Evidence of improved practice within schools Feedback from parents 	£3,753
Total				£3,753

9. More children and young people are engaged in learning

Baseline information: **FFT and School Census data for pupil achievement levels. FSP data**

Measures: **Increase in pupils attaining their projected attainment levels, percentage of primary school children who score 6 or better in CLL with a minimum of 78 overall**

Rationale: **Identified as priority through the Extended Services Planning Process**

Objective		Action	Success Criteria	Costs
9.1	Develop a mentoring scheme for children and young people who are becoming disengaged from learning	<ul style="list-style-type: none"> Map existing mentoring services currently on offer across Worcestershire Identify target schools Develop a project specification Commission project 	<ul style="list-style-type: none"> Mentoring scheme in place 	Costs identified once project has been identified
Total				TBC

Section 2

These actions are a direct result of priorities identified through the Worcester City Community and School Cluster Planning Process, conversations with schools and partners, engagement with children and young people and interrogation of statistical needs analysis information.

The resources allocated against actions will be devolved locally

10. More families have access to further learning opportunities				
<i>Baseline information: Uptake data from Adult Learning Centres and Connexions. NEET data</i>				
<i>Measures: Number of individuals accessing adult learning provision</i>				
<i>Rationale: Identified by Head teachers through the planning process/Workshops held with Schools</i>				
Objective		Action	Success Criteria	Costs
10.1	Increase the number of Personal & Community Development Learning (PCDL) courses in & around schools	<ul style="list-style-type: none"> Provide opportunities for parents to access EAL learning opportunities 	<ul style="list-style-type: none"> Number of parents accessing EAL courses 	£10,000
		<ul style="list-style-type: none"> Work in partnership with family learning co-ordinator and partner agencies to widen access to ICT opportunities, including online learning 	<ul style="list-style-type: none"> More families have access to ICT provision 	TBC
10.2	Increase informal learning opportunities	<ul style="list-style-type: none"> Worcester wide showcasing event 	<ul style="list-style-type: none"> Event delivered and good attendance 	£4,000
		<ul style="list-style-type: none"> Pilot a project for Lads & Dads with Worcester Library Service 	<ul style="list-style-type: none"> Project developed 	TBC
		<ul style="list-style-type: none"> Pilot school initiatives that enable parents to support children in their learning 	<ul style="list-style-type: none"> Number of school initiatives Extent to which these are sustainable 	£7,000
		<ul style="list-style-type: none"> Pilot an after school family learning arts project at St George's CE Primary 	<ul style="list-style-type: none"> Project developed 	£2,000
		<ul style="list-style-type: none"> Pilot initiatives in partnership with Healthy Schools & Health Improvement Advisor that promote healthy living, including a family learning cookery programme at St Clement's Primary 	<ul style="list-style-type: none"> Projects developed 	£1,000
Total				£24,000

11. More families supported by Early Intervention family support

Baseline information: ES Audit data. CAF Co-ordinator data

Measures: Increase in schools offering Full or Sustainable services in the early intervention and support element of the core offer. Feedback from the CAF Co-ordinator regarding the implementation of the CAF

Rationale: Identified by Head teachers through the planning process and Pyramid meetings. There are 12 Super Output Areas in Worcester City that fall within the most deprived 30% in England, two of which are in the most deprived 10%

Objective		Action	Success Criteria	Costs
11.1	Increase capacity of existing early intervention family support	<ul style="list-style-type: none"> Support relevant CPD initiatives including, for example, Active Listening Project 	<ul style="list-style-type: none"> Project developed Number of schools meeting ES full offer of early identification and support 	£6,000
11.2	Improve schools/families understanding of early intervention	<ul style="list-style-type: none"> Support the development of multi-agency teams around schools, including Multi Agency Forum (MAF) 	<ul style="list-style-type: none"> Number of agencies engaged on ongoing basis with MAF 	N/A
11.3	Support children's transition during key stages in their learning	<ul style="list-style-type: none"> Pilot the development of creative arts workshops 	<ul style="list-style-type: none"> Projects identified 	£16,000
		<ul style="list-style-type: none"> Pilot the Pupils Attitude to Self and School (PASS) project with Bishop Perowne CE College with children at KS2 through KS3 	<ul style="list-style-type: none"> Project identified and implemented 	£4,000
Total				£26,000

12. More children and young people accessing positive activities

Baseline information: *Healthy Schools Team data for sports provision. ES Audits (VMA). FSP data and Key Stage data for Mathematics and English.*

Measures: *Increase in 5 hour high culture/sports offer. More schools offering full or sustainable services in VMA element of the core offer. Increase in Mathematics and English attainment figures*

Rationale: *Identified by Head teachers through the planning process/Meeting government agenda*

Objective		Action	Success Criteria	Costs
12.1	Seek the views of children and young people via existing forums and work with partners to increase existing provision and develop a range of inclusive activities in a safe environment	<ul style="list-style-type: none"> Investigate the potential to utilise holiday schemes to support the transition between primary and secondary schools To work with the full range of partners to support and enhance the holiday provision available in Worcester City, with a specific emphasis on creative and informal learning opportunities Support pyramid wide initiatives that enable children to access a varied menu of activities 	<ul style="list-style-type: none"> Number of children for whom ongoing support is provided in new settings following links made in holiday scheme Project identified and delivery and number of children engaged 	£35,000
		<ul style="list-style-type: none"> Pilot the development of targeted after school initiatives to enhance learning. 	<ul style="list-style-type: none"> Projects identified 	£5,000
		<ul style="list-style-type: none"> Provide interim support to Medway Youth Project to enable longer term sustainability 	<ul style="list-style-type: none"> Project identified 	£5,400
		<ul style="list-style-type: none"> Provide support for a Travellers Play Session and develop a sustainability plan to maintain sessions long term 	<ul style="list-style-type: none"> Number of adults and children attending 	£10,450
12.2	Increase communication to schools and other agencies on activities for Children and Young people and improve signposting	<ul style="list-style-type: none"> Establish current local provision provided by City Council and community centres 	<ul style="list-style-type: none"> Fully comprehensive list of activities All children have access to information 	N/A
12.3	Work with key agencies to support most vulnerable children and young people (incl. NEET)	<ul style="list-style-type: none"> Work with Youth Support to identify joint working opportunities to support the most vulnerable children and young people in Worcester City 	<ul style="list-style-type: none"> Number of children accessing initiatives 	£10,000
Total				£65,850

13. More families aware of parenting support available

Baseline information: Parenting Support element of the ES Audit

Measures: More schools offering Full or Sustainable services in the Parenting Support element of the core offer

Rationale: Identified by Head teachers through the planning process

Objective		Action	Success Criteria	Costs
13.1	To increase access to parenting support via extended services	<ul style="list-style-type: none"> Pilot Parents 4 Parents Mentoring Programme at Elgar Technical College 	<ul style="list-style-type: none"> Number of individuals trained via parent mentoring programme 	£1,000
		<ul style="list-style-type: none"> Support Tudor Way Children's Centre & Dines Green "Visioning Day" 	<ul style="list-style-type: none"> ½ inset day takes place 	N/A
13.2	Reduce stigma attached to parenting support & family learning	<ul style="list-style-type: none"> Include in discussions at Parental Forums 	<ul style="list-style-type: none"> Percentage increase in parents accessing current opportunities 	N/A
Total				£1,000

14. Improved support for families for whom English is not their first language

Baseline information: School Census data and Instant Atlas EAL figures

Measures: Increase in EAL families accessing schools and/or activities

Rationale: Identified by Head teachers through the planning process. To date 906 school pupils in this area have been identified as speaking English as an additional language

Objective		Action	Success Criteria	Costs
14.1	Improve support for children & young people with EAL	<ul style="list-style-type: none"> Support out of school initiatives specific to children with EAL Liaise closely with partners working with minority ethnic communities to establish current provision and ongoing need 	<ul style="list-style-type: none"> Provision mapped and number of new initiatives developed 	TBC
Total				TBC

Section 3

This section of the plan outlines priorities and actions that require further central exploration as to how to implement them locally. These actions build on good practice, locally and nationally, and will support schools and/or the local authority to meet their statutory duties. It is envisaged over time these actions will be delivered locally.

Resources allocated against these actions are countywide costs (total across all 12 Clusters)

15. All schools are actively promoting Community Cohesion			
<i>Baseline information: Content with School Development Plans (SDP), Self Evaluation Forms (SEFs)</i>			
<i>Measures: Content with SDP, SEFs and Cluster Action Plans, case studies of good practice, feedback from OfSTED</i>			
<i>Rationale: Legal duty, identified as an area for development through the Extended Services Planning Process, supports other areas of Children's Services</i>			
Objective	Action	Success Criteria	Costs
15.1 Provide ongoing support for a Community Cohesion strategy, which supports Worcestershire schools to meet the new duty to promote community cohesion	<ul style="list-style-type: none"> Support schools to develop implementation plans designed to meet the duty to promote community cohesion Develop a network of schools that can cascade information to other schools 	<ul style="list-style-type: none"> Positive OfSTED reports on schools implementing community cohesion duty 	£5,000 (approx)
Total			£5,000
16. More school leaders are community leaders			
<i>Baseline information: To be developed</i>			
<i>Measures: Number of school leaders accessing community leadership training</i>			
<i>Rationale: Good quality community leadership in schools has been widely documented as a key success factor in the Extended Services Agenda</i>			
Objective	Action	Success Criteria	Costs
16.1 Support the development of school leaders as community leaders	<ul style="list-style-type: none"> Work with the Operational Manager: Professional Learning and Development (OM:PLD), to develop a strategy and subsequent action plan 	<ul style="list-style-type: none"> To be determined by OM:PLD 	£20,000 (approx)
Total			£20,000

17. More parents have access to information

Baseline information: Information taken from Information to Parents Strategy

Measures: Yearly consultation with parents, Extended Schools Audit

Rationale: Identified as a priority through the Extended Services Planning Process, elements of the Information to Parents Strategy and is a Local Authority Duty within the Childcare Act 2006

Objective		Action	Success Criteria	Costs
17.1	Develop information areas for parents in schools and other appropriate community venues	<ul style="list-style-type: none"> Install leaflet racks and notice boards in most schools Train appropriate members of staff to ensure areas are maintained Maintain electronic information kiosks in schools 	<ul style="list-style-type: none"> All schools have a parent information area 	£65,000 (approx to be delivered to 250 schools)
Total				£65,000

Total Resource Allocation

Section 3 Centrally led projects (Countywide costs)	Resources allocated to Worcester City
£90,000	£298,767

The funding amounts are only estimates at this stage and are likely to change once projects / services develop. The change in these amounts will be reflected in the formal review of this plan. Additional resources may well be identified to support areas of work yet to be identified, once again these will be reflected when the plan is refreshed. In the event that there should be any funding remaining consideration will be given to supporting emerging priorities or devolving funding directly to individual schools.